

Getting to Know Britax One4Life All-In-One Car Seat with ClickTight



Getting to Know Britax One4Life All-In-One Car Seat

- ❑ When you have completed this Continuing Education Unit session you will:
 - Have an understanding of the product features that the One4Life All-In-One Car Seat includes.
 - Be familiar with the weight, height and age requirements for the One4Life All-In-One Car Seat including use of the CLICKTIGHT Installation System.
 - Have a general understanding of the installation of One4Life All-In-One Car Seat rear-facing.
 - Have a general understanding of the installation of One4Life All-In-One Car Seat forward-facing.
- ❑ For this CEU opportunity, you must answer **16** out of **20** questions correctly in order to get the one (1) CEU awarded. If you incorrectly answer more than **4** questions, then you may review the material again and retake the quiz.
- ❑ Much of the information in this CEU material can be found at us.britax.com and in the user guides for each model.

ClickTight Installation Technology



Step 1

Open

Quick, easy access to belt path



Step 2

Buckle

Installs simply with just the vehicle seat belt



Step 3

Close

Built-in seat belt tensioner eliminates installation struggle

Reminders with CLICKTIGHT Installation Technology

1

CLICKTIGHT does not require any pushing or pulling to tension the vehicle belt or compress the vehicle seat.

2

Installation with a vehicle seat belt is preferred / recommended over lower connectors.

3

It is a LOCK-OFF.
User Guide does not instruct to switch retractor w/ Lap-shoulder belts.

4

ALWAYS release vehicle buckle BEFORE opening CLICKTIGHT when removing from vehicle.

Designed for Safety from Birth to 10 Years

Modes of Use

- (15) Harness & Headrest positions (in): 9"-19" (~7.5 w/ insert)
- (3) Buckle position at 5.5", 6.75" & 8.75"

Rear-Facing Harness Mode:

- 5 lbs. to 50 lbs.
- up to 49" in height
- Lower Connector Installation (max child weight): 30 lbs.
- Infant Insert- Optional up to 20 lbs. Rear-Facing – MUST be removed at 20 lbs.

Forward-Facing Harness Mode:

- 22 lbs. to 65 lbs.
- Up to 49" in height
- Lower Connector Installation (max child weight): 35 lbs.

Belt-Positioning Booster Mode:

- 40 to 120 lbs.
- 44 to 63" in height
- LATCH can be used to position Booster

➤ Expires 10 Years from Date of Manufacture



Infant
5-20 lbs



Toddler
20-50 lbs



Preschool
22-65 lbs



Big Kid
40-120 lbs

Features

Safety, Comfort & Convenience



Safety, Comfort & Convenience



Features



5-Point
Safety Harness

Safety, Comfort & Convenience



Features



V-Shaped Tether



Steel Frame



SafeCell Technology



2 Layers Side Impact Protection



15-Position, Quick-Adjust Headrest & Harness



9-Position Recline



2-Dishwasher Safe Cup Holders



Naturally flame-retardant knit is safe to machine wash and dry.
us.Britax.com/pages/safewash

Child Fitment: Rear-Facing Harness Mode



REAR-FACING WITH HARNESS

Use only:

- with harness straps in closest position below the child's shoulders, and
- with children weighing 5 - 50 lb (2.3 - 22.7 kg), and
- when the top of child's head is at least 1 in (2.5 cm) below the top edge of headrest.

REAR-Facing Installation Harness Mode

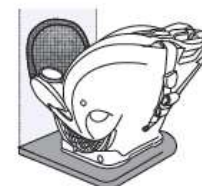
Britax strongly recommends that children should ride **REAR**-facing until they exceed the weight or height limits specified.

Use **REAR**-facing only:

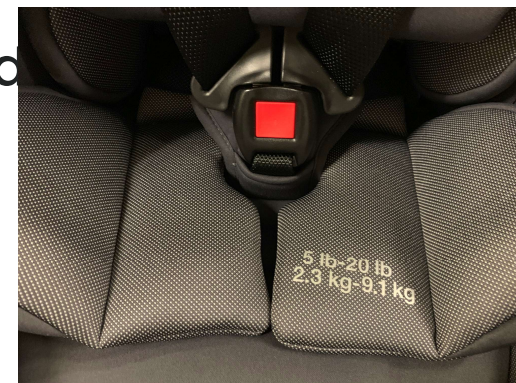
- with harness straps in closest position below the child's shoulders, **and**
- with children weighing 5 - 50 lb (2.3 - 22.7 kg), **and**
- when the top of child's head is at least 1 in (2.5 cm) below the top edge of headrest.

For models with anti-rebound bar:

Follow the instructions on page 17 to attach the anti-rebound bar to the child restraint before installing.



Child Fitment: Rear-Facing Harness Mode



Infant Insert Pillow

The infant insert can be used with infants weighing 20 lb (9.1 kg) or less. Do not use with infants more than 20 lb (9.1 kg).



Headrest Cover

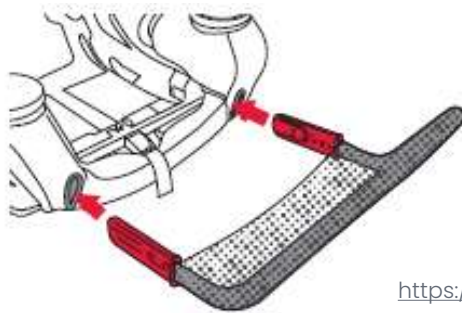
The headrest cover must be unfolded for infants weighing 20 lb (9.1 kg) or more.



Cup Holders

Anti-Rebound Bar (ARB)

- Select Models will include the Anti-Rebound Bar (ARB).
- The use of the ARB is optional in the United States, it is not required.
- The ARB can be purchased as an accessory.

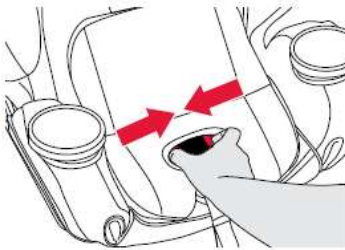


<https://us.britax.com/shop/car-seat-accessories/anti-rebound-bar-for-one4life-car-seats>

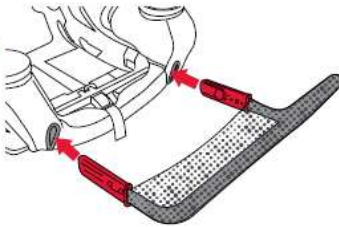
When using the Anti-Rebound Bar (ARB)

Installing the Anti-Rebound Bar

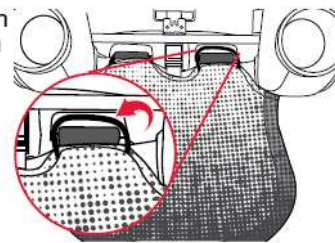
1. **Open the CLICKTIGHT door.** Squeeze the CLICKTIGHT release buttons underneath the front cover flap and lift to open.



2. **Insert the anti-rebound bar** into the two openings at the front of the seat.



3. **Attach elastic bands** from the cover to the hooks on the shell.



4. **Pull the anti-rebound bar** away from child restraint on both sides to confirm connections.

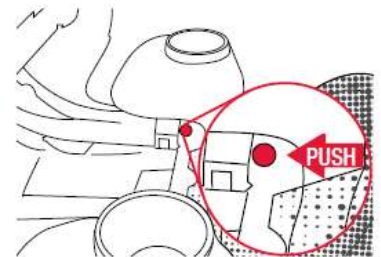
Removing the Anti-Rebound Bar

1. **Open the CLICKTIGHT door.**

2. **Unhook elastic bands** from the front of the seat.



3. **Push the inner red button.** Pull the anti-rebound bar away on one side. Repeat on the other side.



See the user guide and videos for more details.

For models with anti-rebound bar, the anti-rebound **MUST** be removed for FORWARD-facing.

Achieving the appropriate recline – Rear-Facing

Recline Button and Recline Indicator

Recline Guide

Booster mode **MUST** be used in recline position "B".

Rear-Facing no neck control

Rear-Facing neck control or

Forward-Facing

Not Acceptable

Always refer to user guide for instructions and warnings.

BOOSTER MODE
40 - 120 LBS (18.1 - 54.4 KG)
44 - 63" (111.8 - 160 CM)

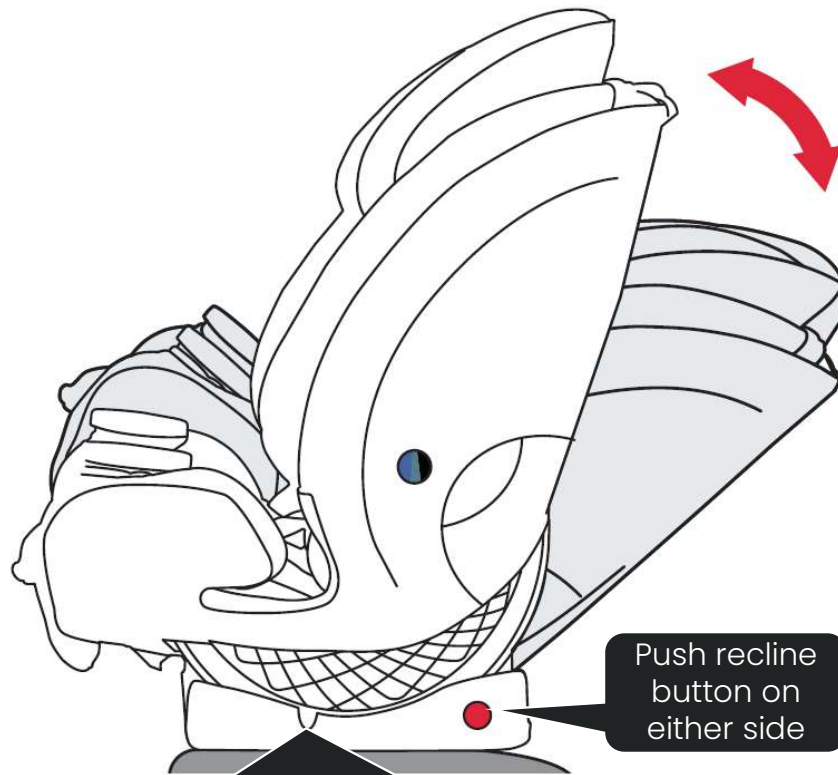
The vehicle shoulder belt should lay straight across chest. The vehicle lap belt should lay low across upper thigh. The shoulder belt guides are positioned above child's shoulders.

Only use lap-shoulder belt with the booster seat.

WARNING
 DO NOT use lap belt only in booster mode

LATCH

P09718100 A07.19



Push recline button on either side

REAR-FACING HARNESS INSTALLATION



For infants with **NO** head and neck control:

Recline indicator arrow tip must be in solid blue section.



Recline indicator arrow tip can **NOT** be in the stripe blue-green or black sections.



For children with head and neck control:

Recline indicator arrow tip must be either in solid blue section or striped blue-green section.



Recline indicator arrow tip can **NOT** be in the black sections.

Use any position 1-8 that places the tip of arrow in the appropriate are for child's development. Do Not use "B" position in harness mode.

Can a pool noodle be used with One4Life?

A pool noodle or rolled towel should ONLY be used if the child does NOT have head and neck control and you are unable to achieve proper installation **REAR**-facing with the base flat and parallel to the vehicle seat with the recline indicator arrow tip in the solid blue section. When using a pool noodle or towel to place the recline indicator arrow tip in the solid blue section, you must ensure the car seat is **REAR**-facing in recline position 1.

User Guide P14211900_A:06.21



Can a pool noodle be used with One4Life?

The edge of the base will not be touching the vehicle seat back and the noodle will not fall exactly in the bight of the seat.



Child Fitment: Forward-Facing Harness Mode

FORWARD-Facing Installation Harness Mode

Britax strongly recommends:

- children should ride **REAR**-facing until they exceed the weight or height limits specified.
- the top tether be used at ALL times when installing the child restraint **FORWARD**-facing. Using the top tether will improve the stability of your child restraint and reduce the risk of injury.

Use **FORWARD**-facing only:

- with harness straps in closest position above the child's shoulder, **and**
- with children weighing 22 - 65 lb (10 - 29.5 kg), **and**
- who are 49 in (124.5 cm) or less in height, **and**
- when the top of the ears are below the top of headrest.



IMPORTANT: Anti-rebound bar **MUST** be removed forward-facing.



FORWARD-FACING WITH HARNESS

Use only:

- with harness straps in closest position above the child's shoulder, and
- with children weighing 22 - 65 lb (10 - 29.5 kg), and
- who are 49 in (124.5 cm) or less in height, and
- when the top of the ears are below the top of headrest.

Britax strongly recommends that children should be secured with a harness system until they exceed the weight or height limits specified.

Achieving the appropriate recline – Forward-Facing

Recline Button and Recline Indicator

Recline Guide

Booster mode **MUST** be used in recline position "B".

Rear-Facing no neck control	Rear-Facing neck control
Forward-Facing	Not Acceptable

Always refer to user guide for instructions and warnings.

BOOSTER MODE
40 - 120 LBS (18.1 - 54.4 KG)
44 - 63" (111.8 - 160 CM)

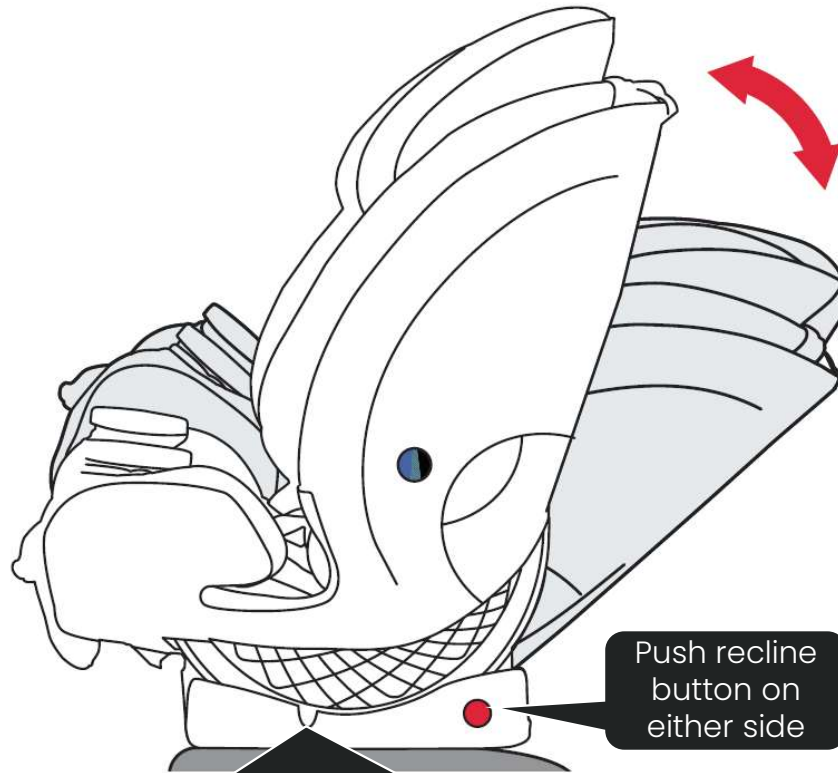
The vehicle shoulder belt should lay straight across chest. The vehicle lap belt should lay low across upper thigh. The shoulder belt guides are positioned above child's shoulders.

Only use lap-shoulder belt with the booster seat.

WARNING
DO NOT use lap belt only in booster mode

LATCH

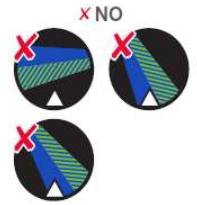
P09718100 A07.19



FORWARD-FACING HARNESS INSTALLATION



Recline indicator arrow tip must be in striped blue-green section.



Recline indicator arrow tip can NOT be in the solid blue or black sections.

NOTE: Do Not use "B" position when using the seat in harness mode.

Recline can be used forward-facing as long as:

- (a) Arrow point in blue-green area
- AND**
- (b) No more than 3" of overhang

Use any position 1-8 that places the tip of arrow in the appropriate are for child's development. Do Not use "B" position in harness mode.

Child Fitment: Forward-Facing Booster Mode



BOOSTER MODE

Use only:

- in recline position "B", and
- with children who weigh 40 - 120 lb (18.1 - 54.4 kg), and
- when top of child's ears are **BELOW** the top of headrest, and
- when the lap belt sits low across child's upper thighs when routed through the belt guide, and
- when the vehicle shoulder belt lays straight across the child's chest, and
- when the shoulder belt guides are positioned above the child's shoulders.



IMPORTANT: Britax strongly recommends that children should remain in a child seat with a 5-point harness until reaching the maximum weight or height allowed.

Use in **BOOSTER** mode only:

- in recline position "B", **and**
- with children who weigh 40 - 120 lb (18.1 - 54.4 kg), **and**
- when top of child's ears are **BELOW** the top of headrest, **and**
- when the lap belt sits low across child's upper thighs when routed through the belt guide, **and**
- when the vehicle shoulder belt lays straight across the child's chest, **and**
- when the shoulder belt guides are positioned above the child's shoulders.








Britax recommends booster mode only after the child outgrows harness mode.

Achieving the appropriate recline – Booster Mode

Recline Button and Recline Indicator

Recline Guide


Booster mode **MUST** be used in recline position "B".


Rear-Facing no neck control 	Rear-Facing neck control  or 
Forward-Facing 	Not Acceptable 


Always refer to user guide for instructions and warnings.

BOOSTER MODE
40 - 120 LBS (18.1 - 54.4 KG)
44 - 63" (111.8 - 160 CM)

The vehicle shoulder belt should lay straight across chest. The vehicle lap belt should lay low across upper thigh. The shoulder belt guides are positioned above child's shoulders.

 Only use lap-shoulder belt with the booster seat.

WARNING
 DO NOT use lap belt only in booster mode 

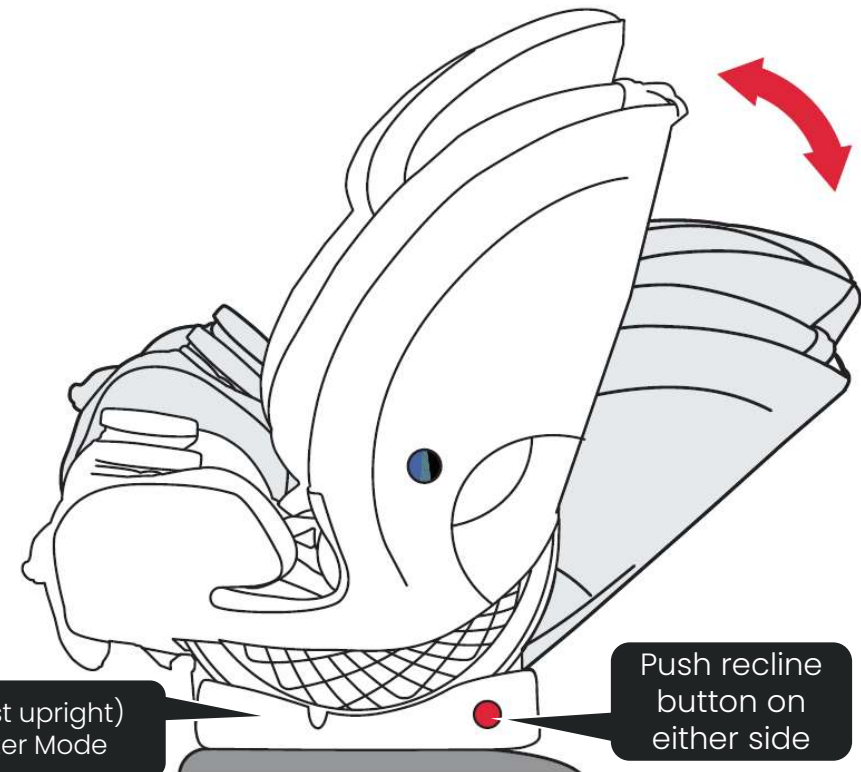
LATCH 

P29718100 A0719

IMPORTANT: Recline **MUST** be in position "B" when seat is used in **BOOSTER** mode.

Reclining the Seat in **BOOSTER** Mode

Push the recline button on either side of the base and rotate the child restraint to position "B".



Can the One4Life be positioned with LATCH in booster mode?

- Yes, both lower anchors and tether.
- Ensure that the LATCH system does not interfere with the vehicle belt function and alignment when securing your child.
- If the Lower anchors are offset from the centerline of vehicle seat belt, it would not be acceptable.

Britax recommends booster mode only after the child outgrows harness mode.



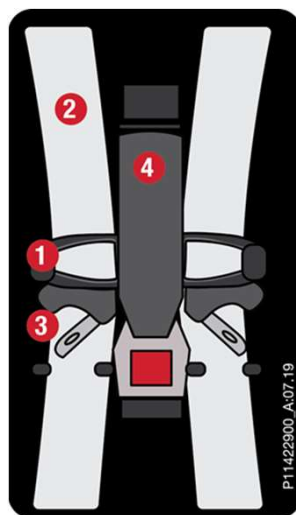
Positioning BRITAX in BPB mode with Lower Anchors



The Britax belt-positioning booster seats can be positioned on the vehicle seat using the lower anchor system. Use the vehicle's lap-shoulder belt to secure the child. Ensure that the lower anchors do not interfere with the vehicle belt function and alignment when securing the child.
Example shown: Offset lower anchors cannot be used to secure a Britax belt-positioning booster because the lap-shoulder will not properly position on the child.

Storing Harness for Booster Mode

Date of manufacture August 2019 through ~ September 10, 2020



Use of LATCH with the One4Life

⚠ WARNING! DEATH or SERIOUS INJURY can occur.

- Use only in a rear-facing position when using it with an infant weighing less than 22 pounds (10 kg).
- Use only with children who weigh between 5 and 120 lbs (2.3 and 54.4 kg) and whose height is 63 inches (160 cm) or less.
- Snugly adjust the belts provided with this child restraint around your child.
- Secure the top anchorage strap provided with this child restraint.
- Use only the vehicle's lap and shoulder belt system when restraining the child in this booster seat.
- Secure this child restraint with the vehicle's child restraint anchorage system, if available or with a vehicle belt.
- Follow all instructions on this child restraint and in the written instructions located in the pocket behind the cover of the child seat.
- Register your child restraint with the manufacturer.
- The provided infant positioning pillow **MUST** be removed for children weighing 20 lb (9.1 kg) or more.

This child restraint system conforms to all applicable Federal motor vehicle safety standards. This Restraint is Certified for Use in Motor Vehicles and Aircraft when used in Harness Mode. This Restraint is Not Certified for Use in Aircraft when used in Booster Mode.

REAR-FACING INSTALLATION HARNESS MODE
5 - 50 LBS (2.3 - 22.7 KG)
Less than 49 in (124.5 cm)

FORWARD-FACING INSTALLATION HARNESS MODE
22 - 65 LBS (10 - 29.5 KG)
Less than 49 in (124.5 cm)

Harness straps in closest position below the child's shoulders

Harness straps in closest position above the child's shoulders

Lower Anchors
Do not install by this method for a child weighing more than 30 lb (13.6 kg).

Lap-Shoulder Belt

Lap Belt Only

Lap Belt Only

Lap-Shoulder Belt

Lower Anchors
Do not install by this method for a child weighing more than 35 lb (15.9 kg).

P14745000_A-11.22

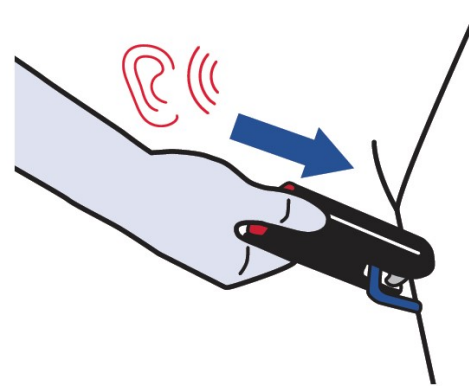
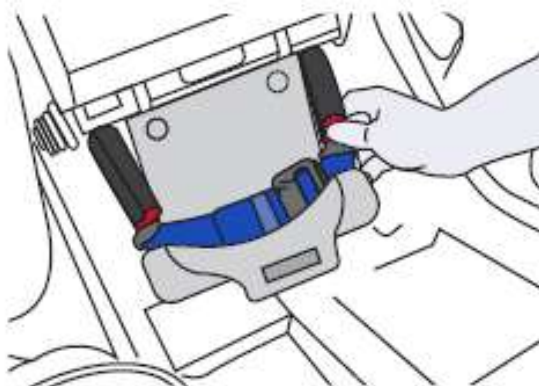
LAP-SHOULDER SEAT BELT INSTALLATIONS ARE PREFERRED.

➤ If / when installed in harness mode with LATCH:

- ✓ Rear-Facing: Do NOT install by this method for a child weighing more than 30 lb (13.6 kg).
- ✓ Forward-Facing: Do NOT install by this method for a child weighing more than 35 lb (15.9 kg).

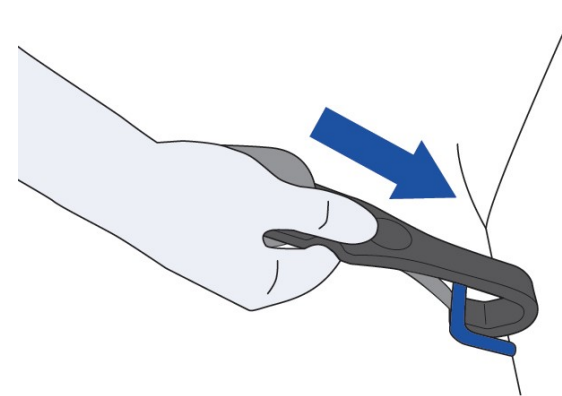
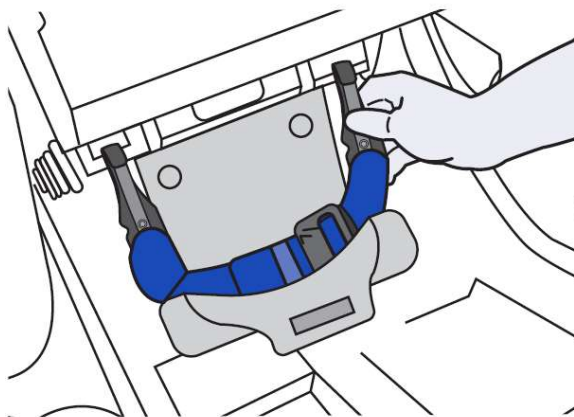
Lower Connectors

Date of manufacture August 2019 through ~ November 20, 2020



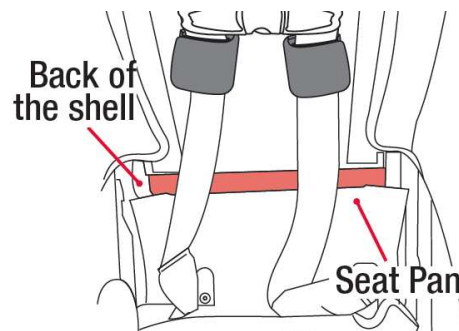
Lower Connectors

Date of manufacture ~ November 21, 2020 through current

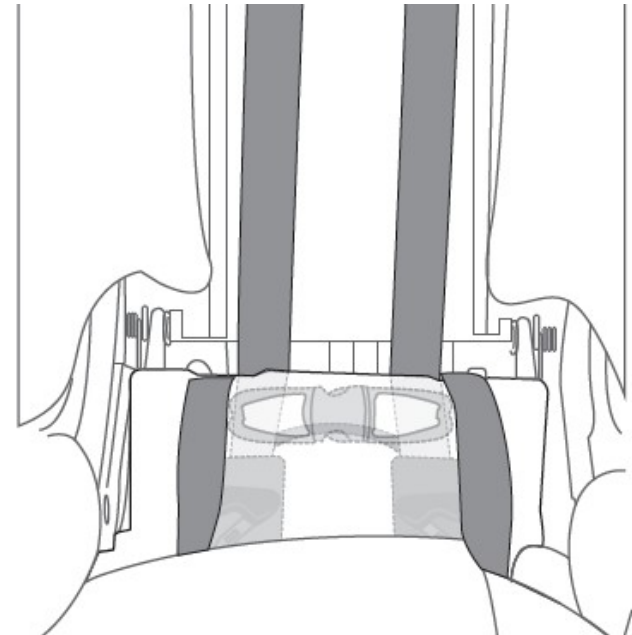
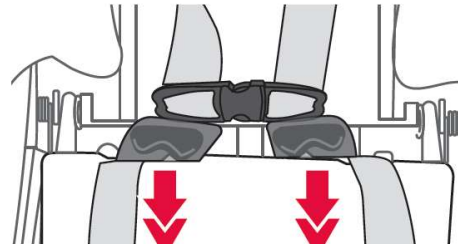


Storing Harness for Booster Mode

- 10. Locate** the space in-between the back of the shell and the back-top part of the seat pan.



- 11. Tuck** in the buckle tongues and comfort pads, pushing them with force down into the gap until the chest clip and excess webbing are no

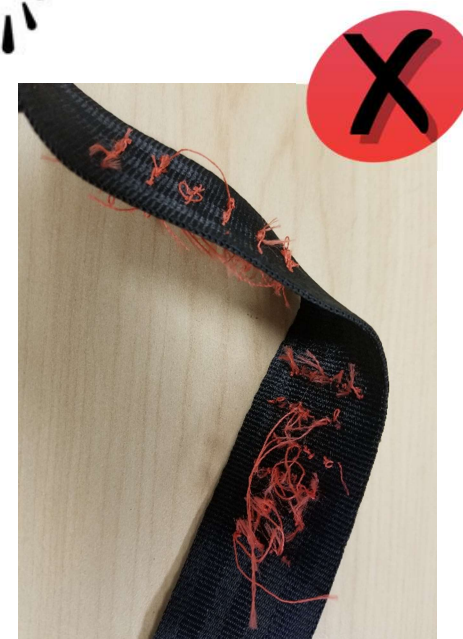
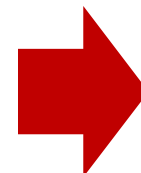
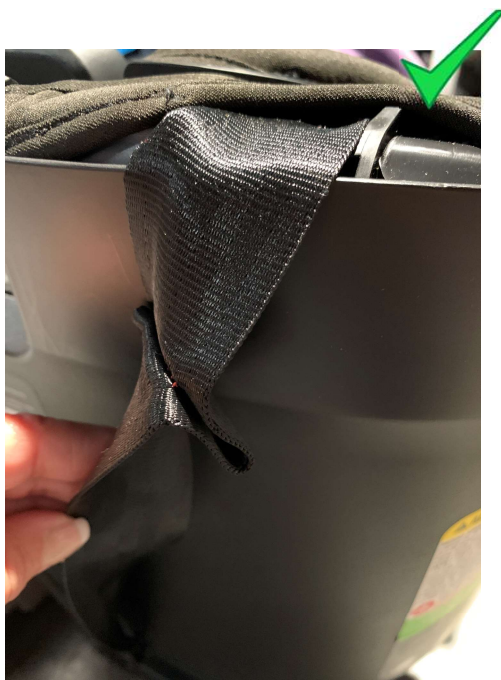


Date of manufacture ~ September 11, 2020 to current

Where is the serial number and manufacture date on the One4Life?



Tether attached during a crash?

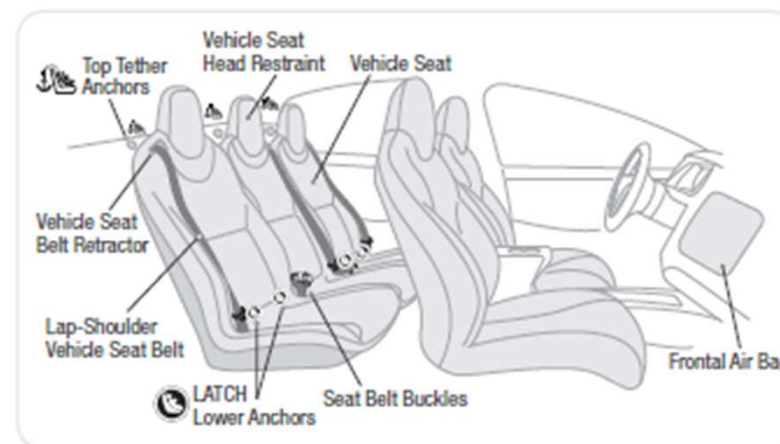


This is one indicator the seat should be replaced.

Can a Britax car seat be installed in the center seating position borrowing the inner anchors (LATCH) of the outboard seating positions?

No. To use lower anchors / LATCH, it must be a designated LATCH position by the vehicle with standard spacing.

Using Lower Anchors and Tethers for Children (LATCH)



The Lower Anchors and Tethers for Children or LATCH, is a system available on this child seat that offers an alternative to vehicle seat belt installation methods. The figure above shows typical locations for lower anchors and tether anchors in a vehicle. See pages 2-3 for LATCH components on this child seat.

Check your vehicle owner's manual to learn if it is equipped with LATCH, the maximum weight rating for the lower anchors, tether anchors capacities, and information on the lower anchor locations and designated seating positions available for use with this child seat.



How much overhang is acceptable with the One4Life?

Harness Mode

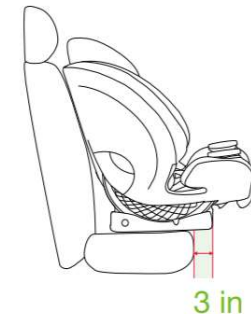
- It is important that the base of the child restraint rests completely flat on the vehicle seat with no side overhang.
- It is permissible to allow up to 3 in. (7.6 cm) of the base to hang over the front edge of the vehicle seat.
- Side overhang is not permitted.

Booster Mode

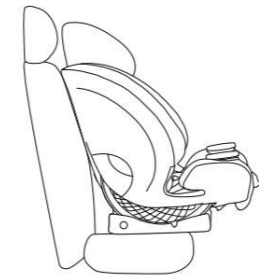
- Overhang is not allowed in booster mode. In booster mode, the base of the child restraint must fit completely on the vehicle seat.
- Side overhang is not permitted.



**Acceptable
Rear-Facing
Harness Mode**



**Acceptable
Forward-Facing
Harness Mode**



**Not Acceptable
Overhang
Booster Mode**

When does the One4Life expire?

NOTES:

- Britax strongly recommends that children should remain in a child seat with a 5-point harness until reaching the maximum weight or height allowed.
- To prevent injury due to deterioration or hidden damage, discontinue use of this child restraint if it is older than ten (10) years. See the Serial Number and Manufactured Date Label on the child restraint.
- Before each use, check this child restraint and its components to make sure they are in good condition and good working order.
- Discontinue use of this child restraint if it has been in a moderate or severe crash. It is not necessary to replace a child restraint after a **minor** crash, defined by the US National Highway Traffic Safety Administration (NHTSA) as:
 - a. The vehicle is drivable from the crash site; **and**
 - b. The vehicle door nearest to the child restraint was not damaged; **and**
 - c. No vehicle occupants were injured; **and**
 - d. There is no visible damage to the child restraint; **and**
 - e. The airbags (if present) did not deploy.

The statement for number of years will be found in the Warnings / Note section of user guide.

For newer models, it can also be found on the serial number label.

XXXXXXXXXXXXXXXXXXXX	MANUFACTURED
MODEL: XXXXXXXXXXXXX	FABRICADOS:
BATCH/LOTE: XXXXXXXXXXX	09 2018
SERIAL/SERIE: XXXXXXXXXXXXX	MO/MES YR/AÑO
EXPIRES/EXPIRS: 09/31/2024	
MANUFACTURED BY/FABRICADOS POR:	
BRITAX CHILD SAFETY, INC.	
4140 PLEASANT RD. FORT MILL, SC 29708 USA	

Installation of the One4Life car seat when vehicle head restraint causes interference.

Vehicle Headrest

⚠ WARNING!

In some cases, the vehicle headrest can prevent the child restraint headrest from being raised high enough to properly adjust the harness for the fit of your child when using a forward-facing reclined position. **DO NOT** force the child restraint headrest past the vehicle headrest. Doing so could cause the child restraint not to perform as intended. If the location of the vehicle headrest interferes with the child restraint headrest, raise or remove the vehicle headrest. If the vehicle headrest can not be removed, move the child restraint to the upright position or try a different seating location.



Inflatable Seat Belt Policy

Can Britax car seats and booster seats be installed with inflatable seat belts?

No. Current models being manufactured cannot. Some discontinued models can.

The Inflatable Seat Belt Policy can be found at

<https://us.britax.com/support/frequently-asked-questions>



How do I clean my soft goods (covers)?


- ONLY SafeWash covers by Britax are machine washable and machine dryable.
- USER GUIDE Cleaning Instructions:
 - Refer to product care label for wash instructions.
 - If care label indicates machine washable, always refer to us.britax.com/faqs for important care information.




Naturally flame-retardant knit is safe to machine wash and dry.

Care Instructions
Instructions d'Entretien
Instrucciones de Cuidado


Machine wash cold, delicate cycle with mild soap

 Laver à la machine à l'eau froide, cycle délicat avec savon doux
 Lave a máquina con agua fría, ciclo de ropa fina con jabón suave


Tumble dry low

 Sécher à la machine cycle doux
 Secar a temperatura baja


DO NOT iron

 NE PAS repasser
 NO planchar

DO NOT bleach

 NE PAS javeliser
 NO utilizar lejía


DO NOT dry clean

 NE PAS faire nettoyer à sec
 NO limpiar en seco


P11250400_A:08.18

Care Instructions
Instructions d'Entretien
Instrucciones de Cuidado


Hand wash with mild soap

 Laves à main à eau froide et savon doux
 Lavar a mano en agua fría con jabón suave


Line dry

 Séchez sur corde à linge
 Colgar para secar


DO NOT iron

 NE PAS repasser
 NO planchar


DO NOT bleach

 NE PAS javeliser
 NO utilizar lejía

DO NOT dry clean

 NE PAS faire nettoyer à sec
 NO limpiar en seco

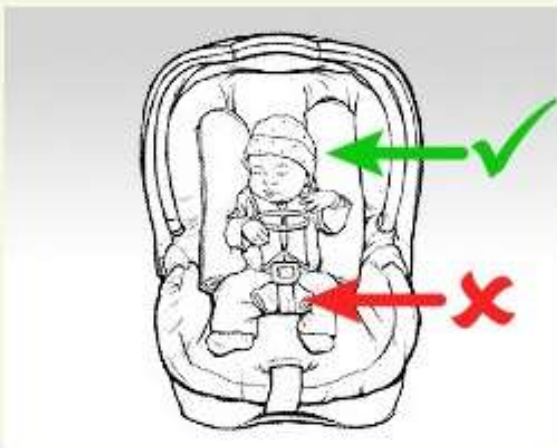
DO NOT machine dry

 NE PAS mettre dans une sécheuse
 NO secar en secadora

P256900_R3:07.13

Crotch Rolls & Side Rolls

ANSWER:



BRITAX rear-facing only and convertible car seats provide positioning inserts with the car seat. As well, offer multiple crotch buckle positions to assist in properly positioning and securing the child in the harness system.

If the positioning insert provided with the BRITAX car seat does not position the child as needed, it is acceptable to place a rolled receiving blanket on each side of the child for lateral support – once the child is properly secured within the harness as instructed in the user guide. The rolled receiving blankets should not be placed between the child and the harness.

It is **not** acceptable to use a crotch roll with any BRITAX car seat to position a child.

Coats | Heavy Clothing



BULKY COAT



LOOSE HARNESS

The following is in each BRITAX user guide in "Securing the Child".

IMPORTANT: Remove bulky coats and/ or jackets before putting the child in the car seat.

- Some suggestions would be:
 - Preheat car.
 - Put jacket on backwards after child is secured in harness.
 - The B-WARM can be used with any Britax rear-facing only seat.

Replacement after a Motor Vehicle Crash

Discontinue use of this child seat if it has been in a moderate or severe crash. It is not necessary to replace a car seat after a minor crash, defined by the US National Highway Traffic Safety Administration (NHTSA) as:

- a. The vehicle is drivable from the crash site; and
- b. The vehicle door nearest the child seat was not damaged; and
- c. No vehicle occupants were injured; and
- d. There is no visible damage to the child seat; and
- e. The airbags (if present) did not deploy



This information can be found in each Britax product user guide in the WARNINGS or IMPORTANT NOTES section as well as an FAQ on our website <https://us.britax.com/support/frequently-asked-questions/after-a-car-crash>.

Certification



Certified for
Aircraft Travel

This restraint is certified for use in motor vehicles and aircraft when used in harness mode. This restraint is not certified for use in aircraft when used in booster mode because belt-positioning boosters require lap-shoulder belts not available in aircraft.

Motor Vehicles

This child seat system conforms to all applicable Federal Motor Vehicle Safety Standards (FMVSS 213).

Aircraft

For aircraft installation, follow the instructions on pages 14- 15. The tether cannot be used.

- Install your child seat in a window seat to avoid blocking the aisle.
- If the aircraft lap belt is too short, ask a flight attendant for a belt extender.
- Your child may experience discomfort if the buckle is located in the seating area of the child seat after installation.
- Inflatable aircraft lap belts are not compatible with this child seat.
- This seat may not fit all aircraft. Contact your airline prior to travel to verify fit.

Best practice is EVERY family member has a seat properly secured (seat belt or car seat. While the children under the age of 2 to be held on lap, rer turbulences are unexpected at any time.

Call airlines and ask if there are discounts for sec children flying during non-popular times or flight

By bringing YOUR car seat with you – you do not about renting a car seat from a car rental agenc

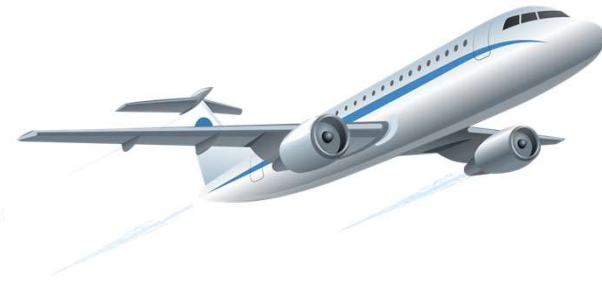
© 2023 Britax Child Safety, Inc. All rights reserved

britax

One4Life Use on Aircraft

Make sure your car seats is approved for use on aircraft. Look for statement on label:

- This restraint is certified for use in motor vehicles and aircraft.
- Belt-positioning booster seats a NOT approved for use on aircraft.



⚠ WARNING! DEATH or SERIOUS INJURY can occur.

- Use only in a rear-facing position when using it with an infant weighing less than 22 pounds (10 kg).
- Use only with children who weigh between 5 and 120 lbs (2.3 and 54.4 kg) and whose height is 63 inches (160 cm) or less.
- Snugly adjust the belts provided with this child restraint around your child.
- Secure the top anchorage strap provided with this child restraint.
- Use only the vehicle's lap and shoulder belt system when restraining the child in this booster seat.
- Secure this child restraint with the vehicle's child restraint anchorage system, if available or with a vehicle belt.
- Follow all instructions on this child restraint and in the written instructions located in the pocket behind the cover of the child seat.
- Register your child restraint with the manufacturer.
- The provided infant positioning pillow MUST be removed for children weighing 20 lb (9.1 kg) or more.



This child restraint system conforms to all applicable Federal motor vehicle safety standards. **This Restraint is Certified for Use in Motor Vehicles and Aircraft when used in Harness Mode. This Restraint is Not Certified for Use in Aircraft when used in Booster Mode.**

P14745000_A:11.22

Encourage Product registration

IMPORTANTE

En caso de una retirada, sólo podemos comunicarnos con usted si tenemos su nombre y dirección.

Usted DEBE enviar la tarjeta adjunta o registrarse en línea para estar en nuestra lista para productos con avisos de retiro del mercado a causa de defectos.

Nosotros ya hemos pagado el envío.

Hágalo hoy.

IMPORTANT

In case of a recall, we can reach you only if we have your name and address.

You MUST send in the attached card or register online to be on our recall list.

We've already paid the postage.

Do it today.



NO POSTAGE
NECESSARY
IF MAILED
IN THE
UNITED STATES

BUSINESS REPLY MAIL
FIRST CLASS MAIL PERMIT NO. 1262 CHARLOTTE, NC
POSTAGE WILL BE PAID BY ADDRESSEE

BRITAX CHILD SAFETY INC
PO BOX 91167
ALLEN TOWN PA 18109-9925



PARA LA SEGURIDAD DE SU NIÑO

Por favor, tómese unos momentos para llenar y devolver la tarjeta adjunta o registre en línea a través del enlace directo a la página web del fabricante.

Aunque los asientos de seguridad para niños se someten a pruebas y evaluación, es posible que un asiento de seguridad para niños podría ser retirado del mercado.

En caso de una retirada, sólo podemos comunicarnos con usted si tenemos su nombre y dirección, así que por favor envíe la tarjeta o registre en línea para estar en nuestra lista de productos con avisos de retiro del mercado a causa de defectos.

Por favor, llene su tarjeta y envíela AHORA, o registre en línea en www.BritaxUSA.com/registration mientras que usted está pensando en ello.

La tarjeta ya está dirigida a Britax y hemos pagado los gastos de envío.

FOR YOUR CHILD'S CONTINUED SAFETY

Please take a few moments to promptly fill out and return the attached card or register online using the direct link to the manufacturer's website provided.

Although child restraint systems undergo testing and evaluation, it is possible that a child restraint could be recalled.

In case of recall, we can reach you only if we have your name and address, so please send in the card or register online to be on our recall list.

Please fill this card out and mail it NOW, or register online at www.BritaxUSA.com/registration, while you are thinking about it.

The card is already addressed and we've paid the postage.

Tear here / Desgarrar aquí

Consumer: Just fill in your name and address and e-mail address (optional)
Consumidor: Sólo tienes que escribir tu nombre y dirección y dirección de correo electrónico (opcional)

Name/Nombre

Address/Dirección

City/Ciudad

State/Estado

Zip/Código Postal

Country/País

E-mail/Correo electrónico (optional/opcional)

CHILD RESTRAINT REGISTRATION CARD
TARJETA DE REGISTRO PARA ASIENTOS DE SEGURIDAD PARA NIÑOS



- Visit the manufacturers website
- Safety Notices
 - <https://www.nhtsa.gov/recalls>
 - <https://us.Britax.com/support/safety-notices-recalls>
- Register CRS
 - Reassure caregivers manufacturers cannot use their contact information for any reason other than to contact them in the event of a Safety Notice.
 - Mailing registration card
 - On-line
 - Call car seat manufacturer Customer Service
 - Number in user guide, label on car seat
 - <https://us.britax.com/support/register-product>

Additional Resources: Installation Videos

- [CLICK HERE](#) Britax One4Life Car Seat Installation: Rear-Facing Harness Mode using LATCH
- [CLICK HERE](#) Britax One4Life Car Seat Installation: Rear-Facing Harness Mode using ClickTight (lap-shoulder belt)
- [CLICK HERE](#) Britax One4Life Car Seat Installation: Forward-Facing Harness Mode using ClickTight (lap-shoulder belt)
- [CLICK HERE](#) Britax One4Life Car Seat Installation: Belt-Positioning Booster Mode using Premium LATCH
- [CLICK HERE](#) Britax One4Life Car Seat: How to Install in Booster Mode using LATCH (hooks)
Date of manufacture ~ September 11, 2020 to current
- [CLICK HERE](#) Britax One4Life Car Seat: How to Remove the Cover
- [CLICK HERE](#) Britax One4Life: How to Install the Cover
- [CLICK HERE](#) Britax One4Life Car Seat: How to Store Premium Quick-Push LATCH Connectors

Additional Resources



Installation Videos (YouTube Channel)

<http://youtube.com/BritaxUSACarSeats>



Access the current BRITAX product user guides

<https://us.britax.com/support/instructional-videos-and-user-manuals>



To determine lower anchor and/or tether capacity use by vehicle make.

[VM-LATCH-Anchor-Weight-Limits-2019-11.pdf \(cpsboard.org\)](#)

Assisting Caregivers

Customer Service

<https://us.britax.com/support/frequently-asked-questions>

Britax products ONLY:

Trouble Shooting Assistance

Call: 888-427-4829

Monday to Thursday
9:00 am - 5:15 pm (ET)

Friday 9:00 am - 4:45 pm (ET)

Submit Email:

<https://us.britax.com/support/contact-us>

Schedule a Virtual Appointment:

<https://britaxtest.appointlet.com/>

Seat Checks

- <https://us.britax.com/press/events>
- Any brand car seat
- Virtual appointments
- In-Person Seat Checks by appointment
- In-Person Seat Check Event Dates

Technician Discounts

- ☐ Yes, we offer discounts to currently certified Technicians and Instructors for personal use.
 - Two products can be purchased per calendar year.
- ☐ U.S. certified seats shipped to a continental U.S. address – Alaska and Hawaii not included.
- ☐ Please email sarah.Tilton@britax.com a PDF of your current wallet card.
 - You can access this through your certification profile at cert.safekids.org. Safe Kids includes a nice [How to Print a Wallet Card](#) if you are not familiar on how to access this.
- ☐ Once I receive your current certification wallet card via email, I will reply providing a current order form including pricing and instructions.

Sarah Tilton, CPST-I

Director, Consumer Advocacy

Thank you!

Product Assistance as Technician/Instructor:



Email: Sarah.Tilton@Britax.com



Phone: (704) 409-1695



<https://www.facebook.com/CarSeatTutor>

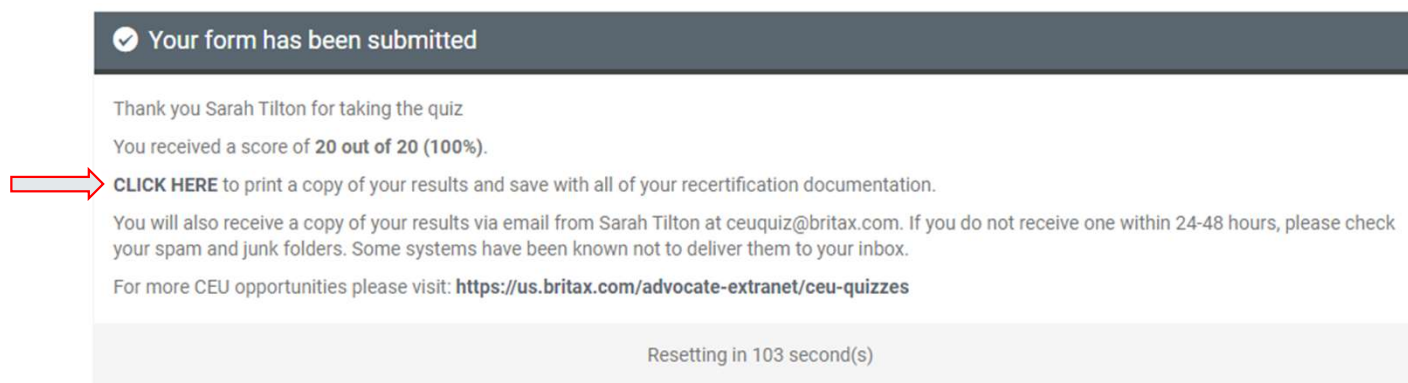


[carseat_tutor](#)




Thank you for learning more about BRITAX!

- RECOMMENDED: Once you complete the quiz, you will have the option to print (hard copy or create a PDF) a certificate (see below).



✓ Your form has been submitted

Thank you Sarah Tilton for taking the quiz
You received a score of **20 out of 20 (100%)**.

 **CLICK HERE** to print a copy of your results and save with all of your recertification documentation.

You will also receive a copy of your results via email from Sarah Tilton at ceuquiz@britax.com. If you do not receive one within 24-48 hours, please check your spam and junk folders. Some systems have been known not to deliver them to your inbox.

For more CEU opportunities please visit: <https://us.britax.com/advocate-extranet/ceu-quizzes>

Resetting in 103 second(s)

- You should also automatically receive an email. If you did not print a copy immediately after completion and do not receive an email regarding your score (a) check your spam/junk folder and (b) consult your IT department that the system will allow emails from wordpress@ceu.britax.com On Behalf Of ceuquiz@britax.com.

Thank you for learning more about BRITAX!

- If you successfully completed the quiz, please save the email or print a copy and save with your recertification documentation.
 - The emails come from wordpress@ceu.britax.com On Behalf Of ceuquiz@britax.com. Certificates/emails of completion cannot be re-created.
- If you did not successfully complete the quiz, please review the material again and retake the quiz when you are ready.